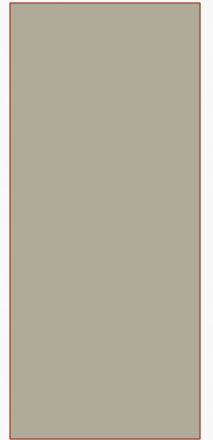


TODD PROPERTIES POSSIBLE ANNEXATION

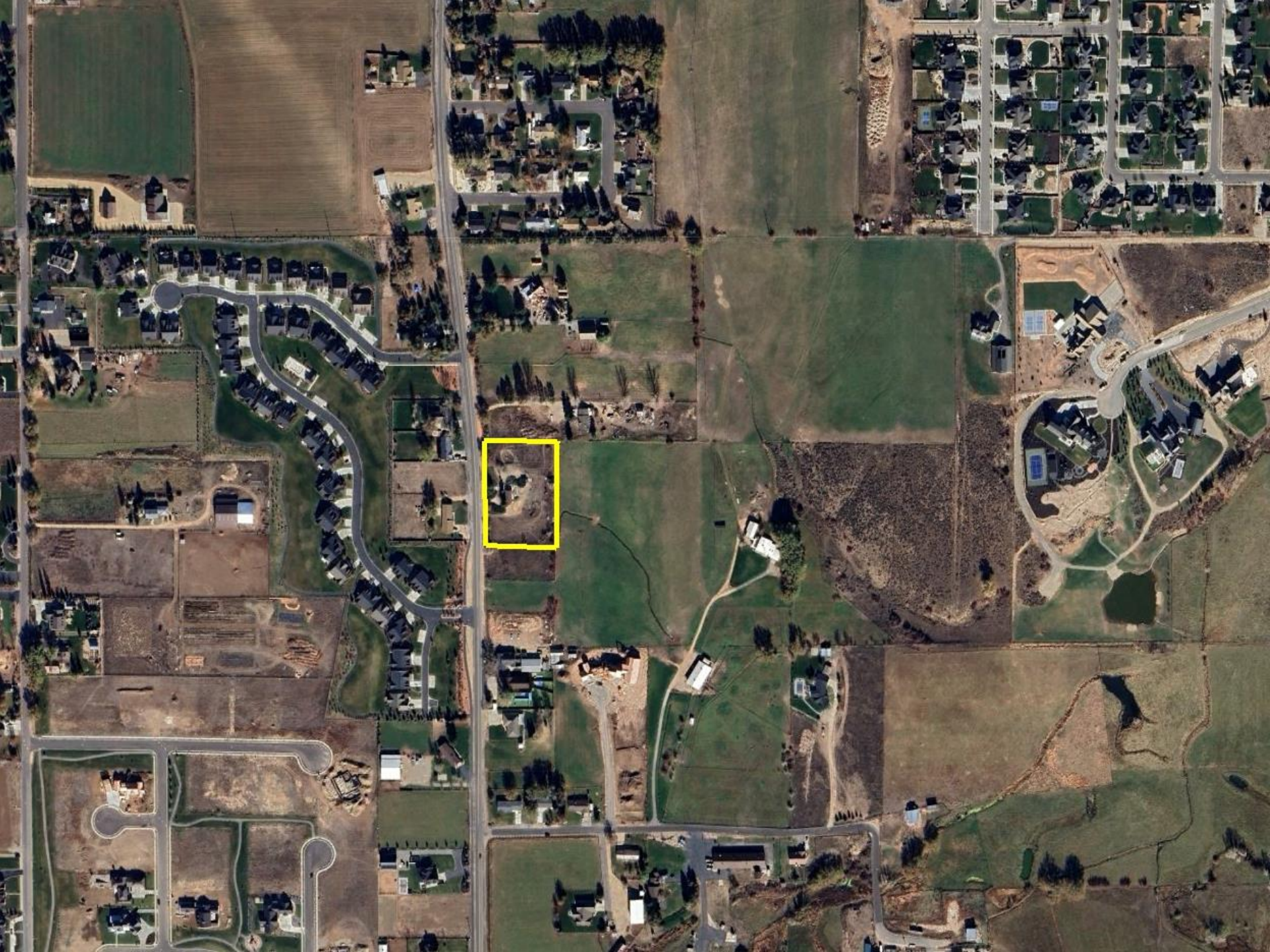
CITY PLANNER

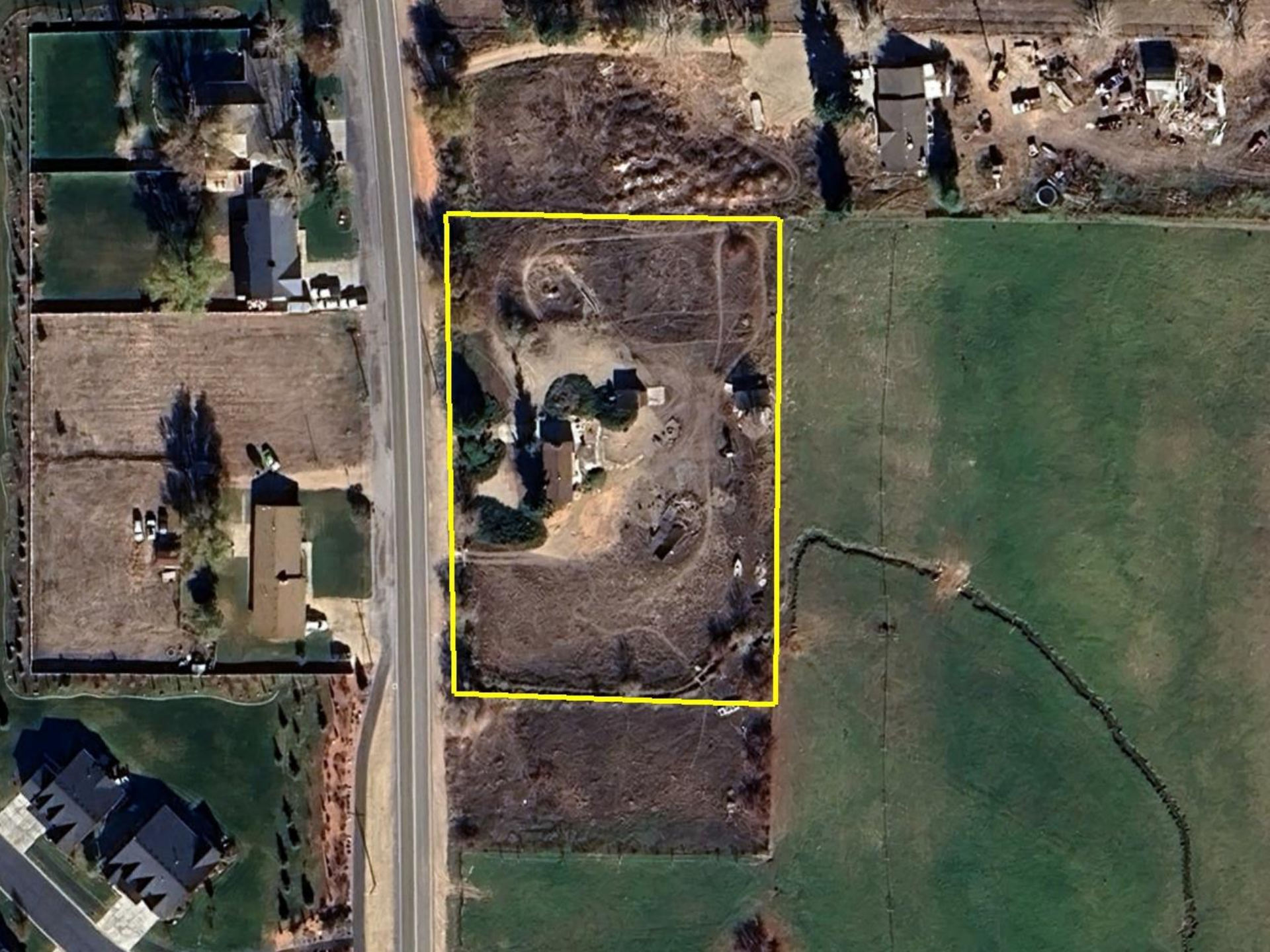


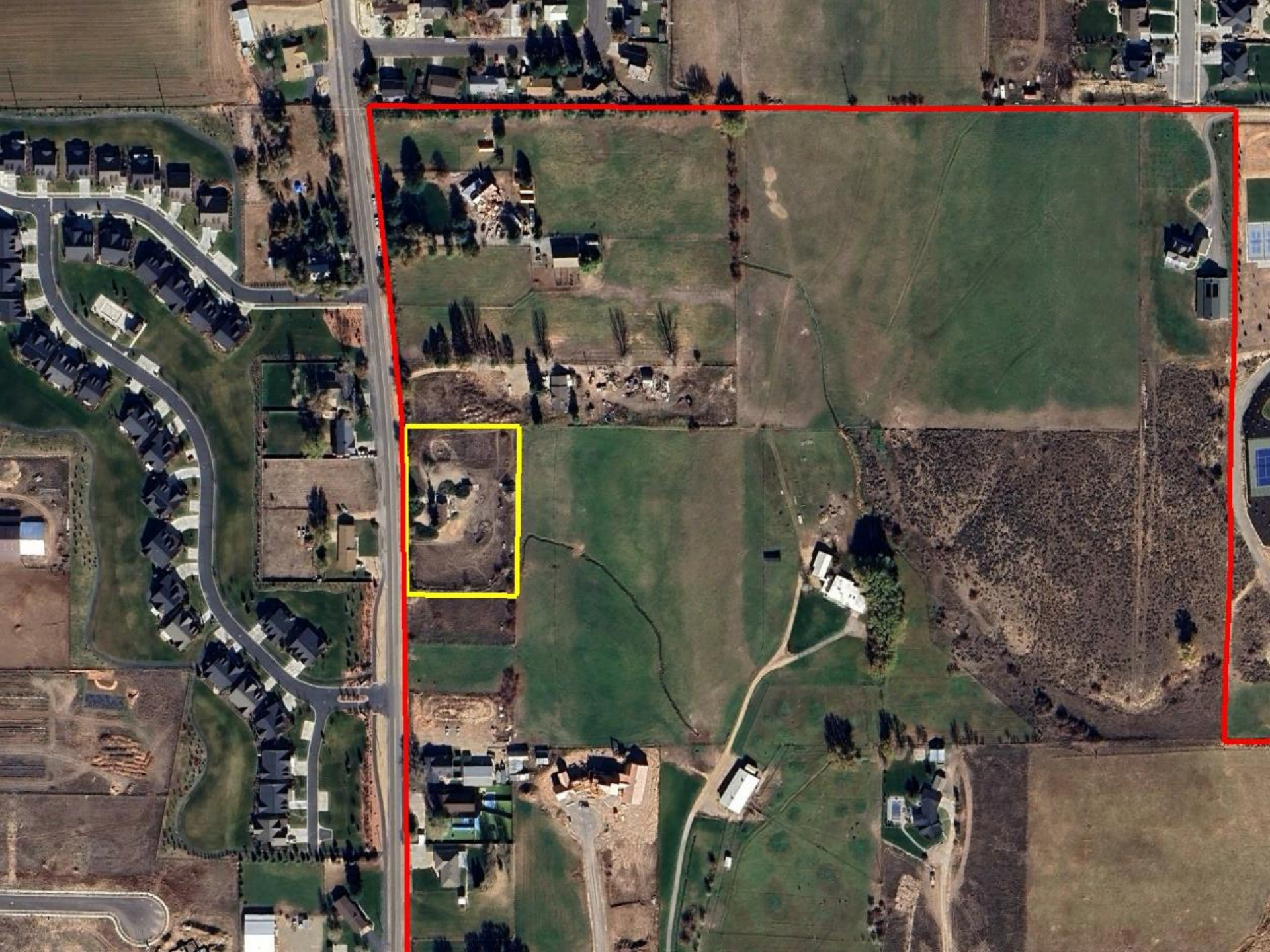
LAND USE SUMMARY

- 1.85 acres (possibly 2.38)
 - 3 parcels (possibly 4)
- Wasatch County Zoning RA-1
- Original lot of record was divided into 6 parcels without receiving county approval
- Borders White's Pear Tree Llama Ranch
 - Potential conservation easement
- Restrict to one lot with building & tree location restriction
- View corridor preservation
- 100' setback from SR 113









1096-1892
8.75 AC +/-

APPENZEL PH 1

N90-0-0W 411.0000

NO-0-0W 125.0000

N90-0-0E 660.0000

00-0008-5071
KLOTOVICH TR

1215-1871

1.97 AC +/-

N90-0-0E 231.0000

~~N90-0-0W 000.0000~~

00-0008-5097

LUCAS

944-69

0.62 AC +/-

APPENZEL PH 1

00-0008-5089

TODD ETAL

1029-507

0.62 AC +/-

NO-0-0W 1'15.0000

N 0-19-25 E 679.54

00-0008-5113

TODD

944-65

0.61 AC +/-

00-0008-5063

SYPHUS

944-67

0.53 AC +/-

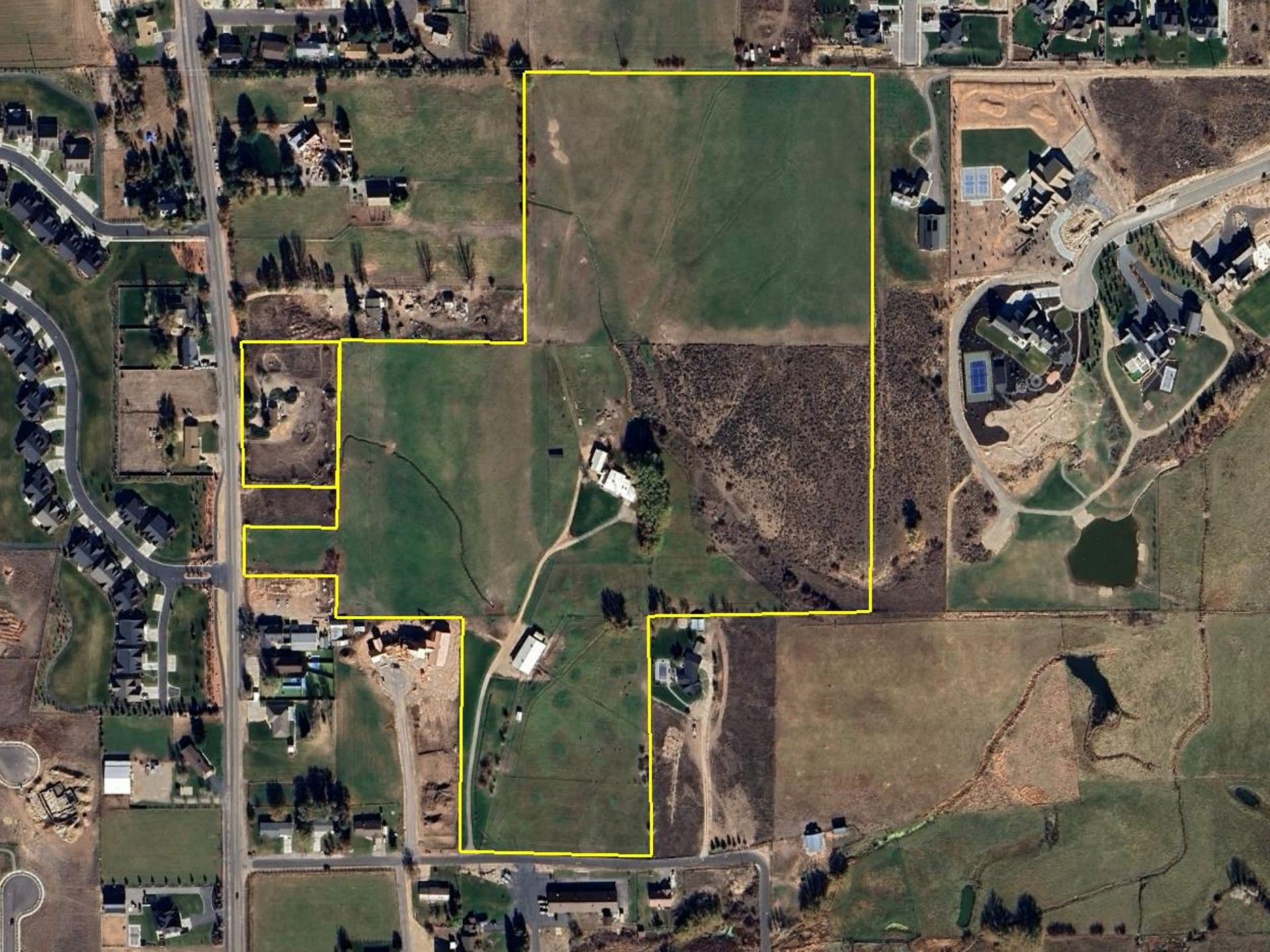
APPENZEL PH 1

00-0008-5139

MADONNA

00.6250

00-0008-5162
WHITE TR
1105-1872
39.79 AC +/-





Google Earth

©2025 Google



Google Earth

©2025 Google



Google Earth

©2025 Google



Google Earth

©2025 Google



Google Earth

©2025 Google

JOSEPH
KLOTOVICH

