

Daycare

Conditional Use Permit

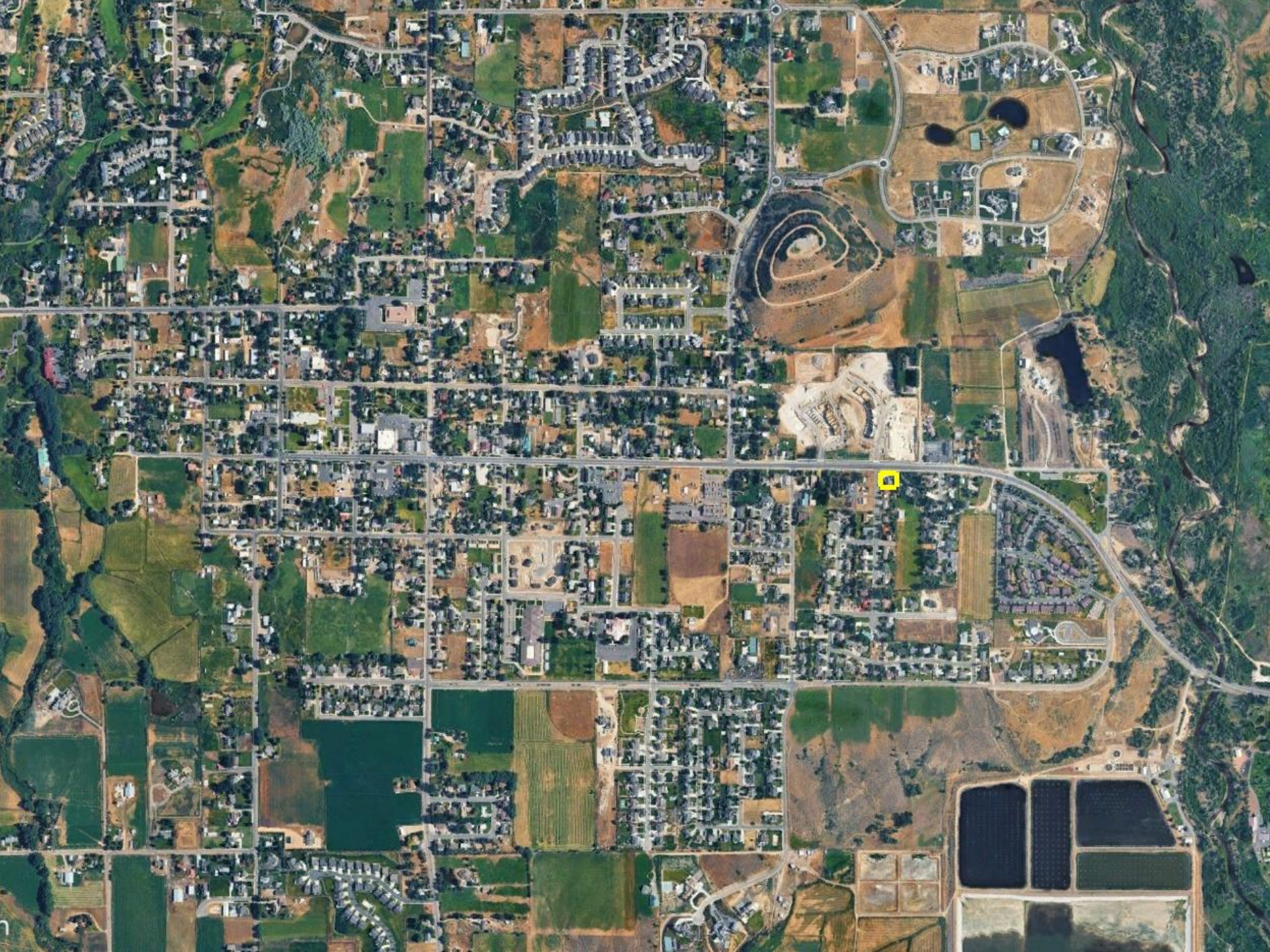


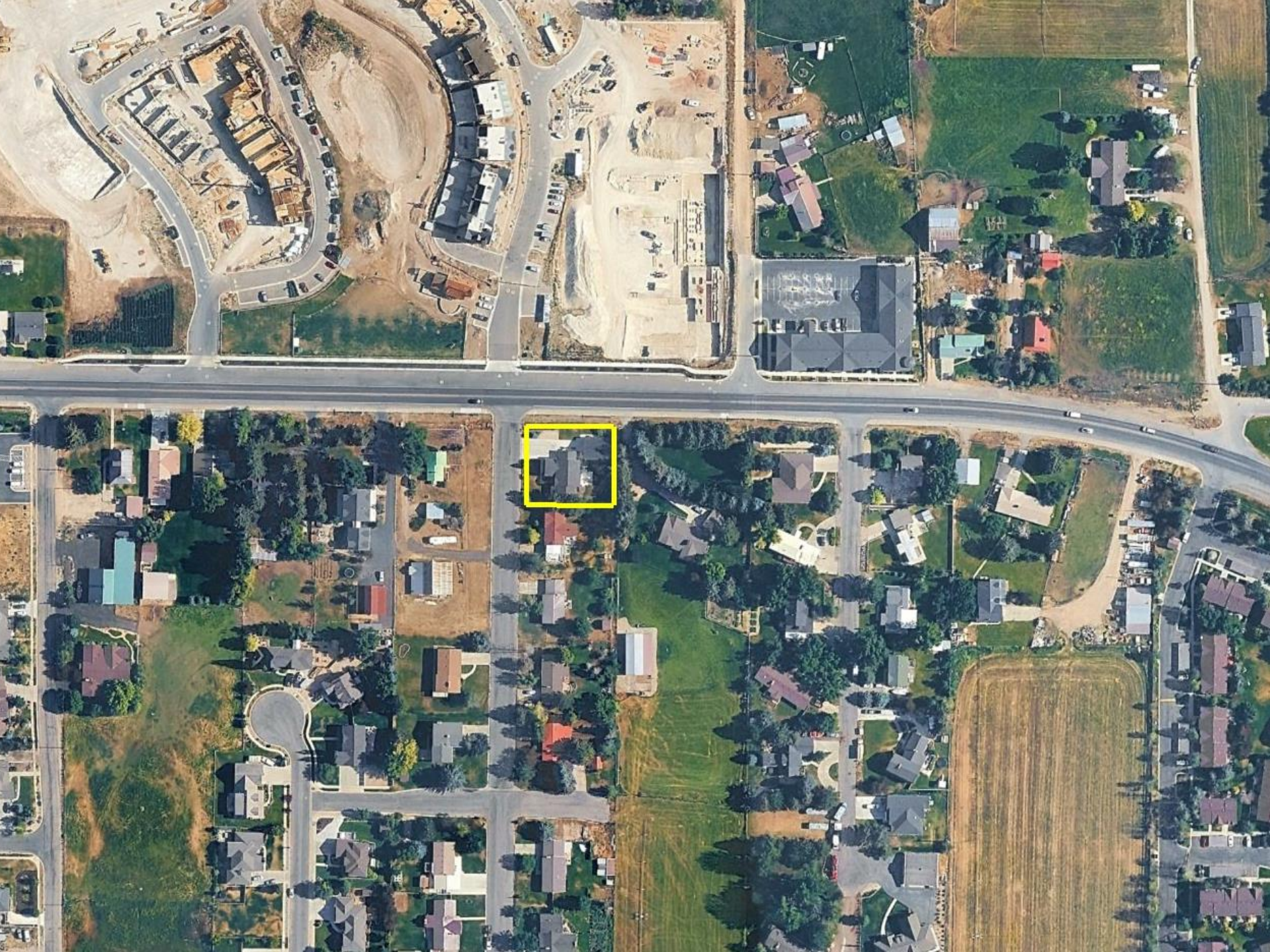
Midway
C.A.R.E.S.

Land Use Summary

- C-2 zone
- 0.32 acres
- Single-family dwelling
- Detached accessory structure
- Approved CUP for mixed-use in 2020











Discussion Items

- Adult daycare for local impaired adults that would participate in activities at the site.
- Facility that would provide day program services for residents of the group home and up to 12 other participants (20 total including the residents).
- State will inspect the facility and determine the maximum number of participants based on state code.
- Participants of the daycare that do not live on the property will be brought to the property by employees of the daycare on activity days.
- No participants will drive their own vehicles to the property
- The applicant has the option to present a parking plan to the City Council that allows accommodation based on the specifics of the proposal and location.



POSSIBLE FINDINGS

- The proposal is a conditional use in the C-2 zone.
- The property was approved as mixed-use in 2020.
- The adult daycare could host up to 20 participants which includes the residents of the on-site home. The state will inspect the facility and determine the maximum number of participants based on state code.



Proposed Condition

- Daycare hours are limited to 9 am to 10 pm Monday through Friday.