

Board of Health Department

Annual Report



Midway
C.A.R.E.S.

A scenic landscape photograph of a sunset over a lake. The sun is low on the horizon, casting a warm, golden glow across the sky and reflecting on the water. Several tall evergreen trees stand in the middle ground, their silhouettes dark against the bright sky. In the background, snow-capped mountains are visible under a cloudy sky. The foreground is filled with tall, golden-brown grasses. The overall mood is peaceful and serene.

Wasatch County Health Department

2025

Annual Report

Alan Day Photography



MISSION

To promote and protect the health and well-being of individuals, families, and our community.

VISION

Optimal community health through collaboration in a highly integrated community health system.

BOARD OF HEALTH



Kendall Crittenden
Chair



Sara Simonsen
Vice-Chair



Michelle Lundlow



Coleen Nielsen



Neal Burton



Jay Eckersley



Britt Manning

PROGRAMS AND SERVICES

- Administration
- Emergency Services
- Environmental Health
- Epidemiology
- Health Promotion
- Public Health Nursing
- Women, Infants, & Children (WIC)





STORIES

CARES PROGRAM

"Making a Difference in Early Childhood Development"



C- Coordinated Care

A- Developmental Assessments

R- Resources and Referrals

E- Education for Parents and Children

S- Safety



1

Served
66 families in 2025

2

Kids improve things like
speech and social skills

3

Several parents expressed
they had better tools to
support their family and
children's needs

MRC VOLUNTEERS

"Medical Reserve Corps (MRC) Volunteering in Community"



1

19 WC-MRC volunteers provided first aid coverage for the four-day Sheepdog Event at Soldier Hollow over Memorial Day weekend.

2

Treated 88 individuals for minor injuries and heat-related concerns

Results from these efforts:

1

Received strong praise from the Olympic Legacy Foundation for professionalism and effectiveness

2

Earned requests for medical support at four additional 2025 events



FALLS PREVENTION

"New Falls Prevention Workshop Series"

1

Stepping
On Program
no longer
funded



2

EMS data
showed falls
remain a major
issue for older
adults



3

Opportunity
emerged to build a
stronger, more
flexible prevention
model



4 Designed and launched the Falls Prevention Workshop Series

5 Monthly expert-led sessions plus individualized home exercise plans



FLU CLINICS

“Flu Shots Becoming More Convenient For Our Community”



1

Accessibility and options for residents to get their flu shot

2

Administered 1,080 Flu Shots during the 2025-2026 flu season

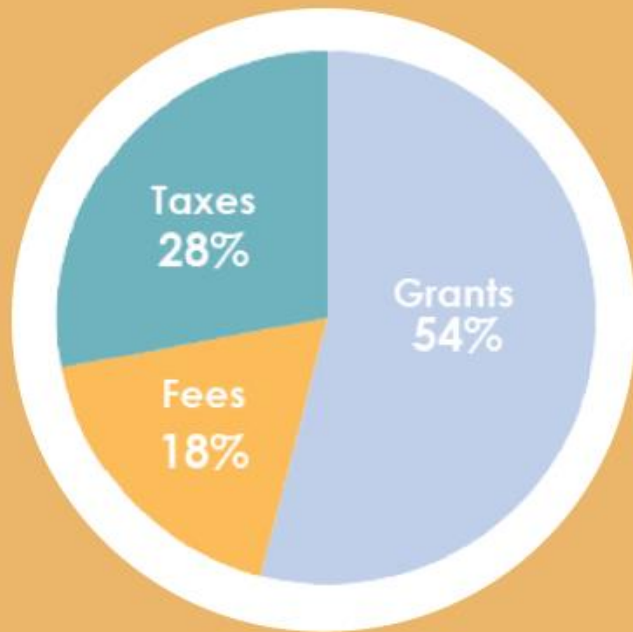
3

E-Clinical (Paperless process) to make payments and provide consent for appointments

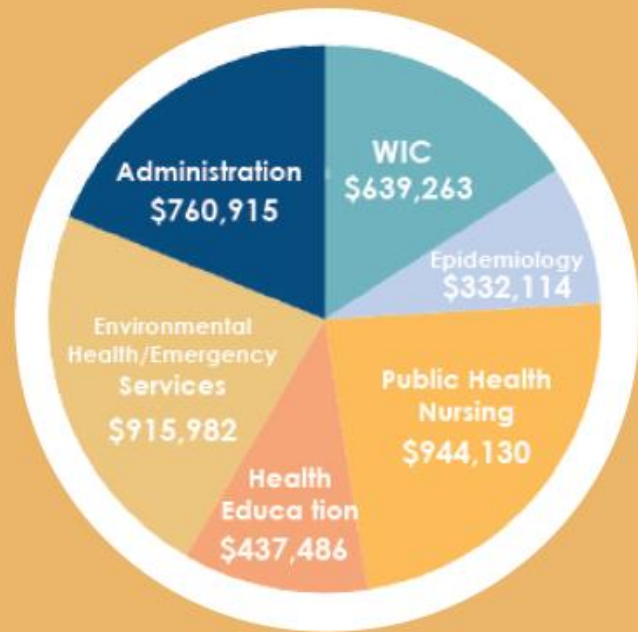


BUDGET

REVENUE



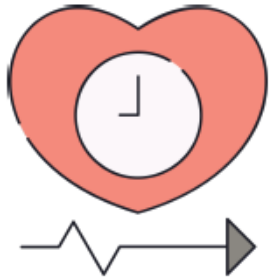
EXPENSES



TOTAL EXPENDITURES: \$4,029,191



FEATURED STATISTICS



82.0 YRS

UT: 80.1 | US: 79.0
Life Expectancy at Birth



9.7%

UT: 14.5 | US: 18.6
Fair/General Poor Health



13.7%

UT: 8.6 | US: 9.2
No Health Insurance



6.0%

UT: 8.7 | US: 10.8
Adults with Diabetes



18.1%

UT: 26.1 | US: 21.4
Depression Prevalence



23.2%

UT: 31.0 | US: 33.3
Adult Obesity

A scenic landscape photograph at sunset. The sky is filled with soft, golden light from the setting sun, which is partially obscured by a range of mountains in the distance. In the middle ground, several tall, dark evergreen trees stand prominently against the bright sky. A calm body of water, likely a lake or a wide river, reflects the light from the sky and the silhouettes of the trees. The foreground is dominated by a dense field of tall, golden-brown grasses that are slightly out of focus. The overall mood is peaceful and serene.

THE END

Alan Day Photography

HEALTH OFFICER MESSAGE



Jonelle Fitzgerald
Health Officer

As we reflect on the past year, I am proud to share the important work of the Wasatch County Health Department which is demonstrated in this report and beyond. Our efforts continue to be grounded in the mission of protecting and promoting the health of our community. This year's accomplishments highlight the dedication, expertise, and collaboration of our entire staff.

I extend my sincere appreciation to the Wasatch County Board of Health, whose planning and policy oversight, guidance, and support strengthens our ability to serve effectively and strategically.

This past year, our clinical team led successful flu vaccination clinics, providing broad access and strong turnout during a critical season. Staff across the department completed emergency response communication trainings that have enhanced our readiness and strengthened our ability to respond to emerging public health needs. Our health education efforts expanded outreach and engagement, while environmental health programs continued delivering essential services that safeguard the wellbeing of residents and visitors alike. A significant focus this year has been on data and informatics infrastructure. This work lays the foundation for improved functions, analysis, and decision-making, to support a more responsive and effective department in the years ahead.

We hope you enjoy this report and find it helpful. We welcome your comments and feedback. It is truly our desire to be responsive to the needs of the community and provide exceptional public health services.

Sincerely,

A handwritten signature in cursive script that reads "Jonelle Fitzgerald".

WASATCH COUNTY HEALTH DEPARTMENT

2025 Annual Report

ALAN DAY PHOTOGRAPHY

PROGRAMS & SERVICES

ADMINISTRATION

- **Public Policy, Budget and Finances, Public Relations**
- **Vital Records: Birth & Death Certificates, Marriage Certificates**

EMERGENCY SERVICES

- **Preparedness & Response Planning and Coordination**
- **Hazardous Materials Incident Response**
- **Volunteer Management (Medical Reserve Corps)**

ENVIRONMENTAL HEALTH

- **Permitting & Inspections:** Body Art Facilities; Food Handlers; Food Service Establishments; Liquid Waste Haulers; Mass Gathering Events; Mobile Home & RV Parks; Public Lodging Facilities; Public Swimming Pools; Public Water Systems; Schools; Septic Systems; Solid Waste Facilities; Tanning Facilities; and Used Oil Facilities
- **Air Quality Monitoring & Promotion**
- **Radon Testing & Awareness**
- **Water Quality Protection**

EPIDEMIOLOGY

- **Disease Surveillance & Data Analysis**
- **Case Investigations & Infection Prevention**

HEALTH PROMOTION

- **Chronic Disease Awareness & Prevention:** Diabetes Prevention; Senior Nutrition Program; Physical Activity Promotion Events
- **Injury Prevention:** Wasatch Safe Kids; Trail and Bike Safety; Child Passenger Safety; Suicide Prevention; Senior Fall Prevention; Zero Fatalities; Life Jacket Loaner Station
- **Substance Misuse Prevention & Control:** Naloxone Training; Safe Medication Disposal; Utah Indoor Clean Air Act; Youth Tobacco Access Regulation; Tobacco Prevention; Tobacco Cessation

PUBLIC HEALTH NURSING

- **Health Clinic:** Blood Sugar; Cholesterol; Urinalysis; BMI & Weight; Blood Pressure
- **Children's Services:** Well Child Exams; Home Visitation
- **Dental Clinic**
- **Immunizations:** Childhood and Adult Vaccines; International Travel Clinic
- **STD & TB Testing and Treatment**
- **Women's Clinic: Breast & Cervical Cancer Screening;** Family Planning & Birth Control; Lifestyle Coaching for Women 40 to 64 Years Old

WOMEN, INFANTS, & CHILDREN (WIC)

- **eWIC Debit Cards for Healthy Foods**
- **Community and Healthcare Referrals**
- **Nutrition Assessment, Counseling, and Breastfeeding Support**

HEALTH SNAPSHOT: HIGH



MAKING A DIFFERENCE IN EARLY CHILDHOOD DEVELOPMENT

The CARES Program began in the summer of 2023 as an initiative to strengthen support for families with young children. Its primary purposes are reflected in its name: **C**are coordination, **d**evelopmental **A**ssessments, **c**onnection to **R**esources and referrals, **p**arent and **c**hild **E**ducation, and improved **S**afety. The program operates as a referral based system that connects families to the right services, education, and community support. It is designed for children from birth to age eight, offering care coordination, developmental screenings, parenting guidance, and referrals to partner programs.

Over the last year we worked with 66 families to help caregivers access the tools and support needed to meet their children's developmental needs. Through this coordinated assistance, we have seen caregivers report stronger parenting skills, children begin to speak, potty train, engage socially, learn new abilities, and thrive in their daily environments.

MEDICAL RESERVE CORPS (MRC) VOLUNTEERING IN COMMUNITY

The Wasatch County Medical Reserve Corps (WC-MRC) provided first aid support for the annual Sheepdog Event at Soldier Hollow over Memorial Day Weekend. The four-day event hosted thousands of spectators and participants. Nineteen WC-MRC volunteers staffed the first aid station and treated 88 individuals for minor scrapes, general aches and pains, and sun or heat related issues.



The Olympic Legacy Foundation voiced strong appreciation for the professionalism and effectiveness of the WC-MRC by noting the high quality of support provided. Building on this trust, the Foundation subsequently requested first aid coverage for four additional events in 2025.





NEW FALLS PREVENTION WORKSHOP SERIES

In 2025, our community faced an unexpected challenge when we learned that Stepping On, the evidence-based falls prevention program we had relied on, would no longer be funded and that Utah would lose its license to offer it. At the same time, information from local EMS confirmed that falls remained a leading cause of emergency calls among older adults, showing the ongoing need for meaningful prevention efforts. Rather than viewing this as a setback, it became an opportunity to reimagine how we could better support our aging population. After extensive research and thoughtful planning, we developed the Falls Prevention Workshop Series. Participants meet monthly to learn from experts including occupational therapists, trauma nurses, health educators, and pharmacists. These experts provide valuable resources, guidance, and support for individuals in the program. Additionally, participants receive a personalized home exercise plan to build strength, balance, and confidence.

FLU SHOTS BECOMING MORE CONVENIENT FOR OUR COMMUNITY

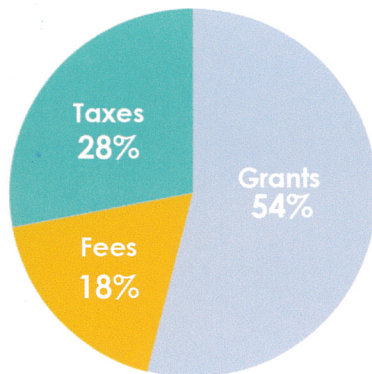
The Health Department is committed to making flu vaccination as convenient and accessible as possible for all residents. To meet people where they are, we offered a wide range of clinic options, including late night hours, drive thru clinics, on site visits to low-income apartment complexes, pop up clinics in Wallsburg, events at county buildings, senior living communities, and the Wasatch County School District.

During the 2025–2026 flu season, we administered more than 1,080 flu shots. This year marked another improvement with the rollout of a fully paperless process. Working closely with our IT department, we developed an online system that allows residents to book appointments, provide consent, and submit payment electronically. The entire process is now integrated into our electronic health record and accessible directly through our website, making vaccination even easier and more efficient.

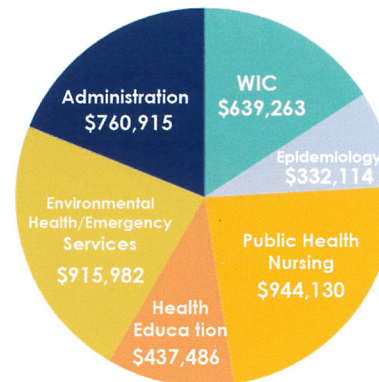


2025 BUDGET

REVENUE



EXPENSES



TOTAL EXPENDITURES:

\$4,029,191

FEATURED STATISTICS

82.0 yrs

UT: 80.1 | US: 79.0

LIFE EXPECTANCY AT BIRTH

9.7%

UT: 14.5 | US: 18.6

FAIR/POOR GENERAL HEALTH

13.7%

UT: 8.6 | US: 9.2

NO HEALTH INSURANCE

6.0%

UT: 8.7 | US: 10.8

ADULTS WITH DIABETES

18.1%

UT: 26.1 | US: 21.4

DEPRESSION PREVALENCE

23.2%

UT: 31.0 | US: 33.3

ADULT OBESITY

Sources: CDC NCHS Data Briefs 2026, UDHHS (IBIS) 2023 Version, CDC BRFSS 2023

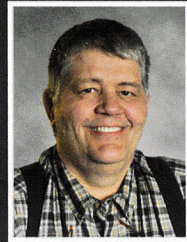
BOARD OF HEALTH

MISSION

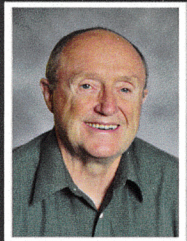
To promote and protect the health and well-being of individuals, families, and our community

VISION

Optimal community health through collaboration in a highly integrated community health system



Kendall Crittenden
Chair



Neal Burton



Jay Eckersley



Michele Ludlow



Britt Manning



Coleen Nielsen



Sara Simonsen
Vice-Chair

CONNECT WITH US



INSTAGRAM

@wasatchcounty_hd



FACEBOOK

Wasatch County Health Department



WEBSITE

wasatchcountyhealth.gov



55 SOUTH 500 EAST
HEBER CITY, UT 84032
(435) 657-3307